



CE RoHS

Electrical Information			
Model No	SL05-10	SL05-20	SL05-30
Power Consumption(η15%)	10W	20W	30W
Power Supply	Inventronics		
Input Voltage	220-240Vac, 50 / 60 Hz		
Power Factor	>0.5		
Surge Protection	6kV line-earth, 4kV line-line		
Driver Type	Constant current (CC)		
Battery	LiFePO4 battery		
Battery Capacity	76.8Wh-6Ah		
Solar Panels	Mono-crystalline solar panel		
Solar Panel Wattage	30W		
Charging Time	>3Hrs		
Operating Time	Normal mode with 100% brightness>8hours, Intelligent mode 3-4 days		
Solar Charge Controller	PWM		
Working Mode	Refer to intelligent control mode		
Control	Timmer dimming/PIR sensor		

Optic Information			
LED Type	LED 2835		
Luminous Flux (η10%)	2000lm	4000lm	6000lm
Efficacy(4000K Ra70)	200lm/W		
Correlated Color Temperature	4000K (3000K, 5000K optional)		
Color Rendering Index	Ra70 (Ra80 optional)		
Beam Angle	R10801, R10803, R10805		
UGR Level	NA		

Description

SL05 Solar Fin is a newly designed LED solar street light, with unique streamlined appearance, it offers full wattage range, the system efficiency is up to 200lm/W, and makes it higher lumen package on lower power. SL05 support solar power and electric power hybrid solution, which makes it flexible to meet different projects and applications.

Key Features

- Nice design with lighter weight, easier installation
- System efficiency up to 200lm/w with competitive price
- The controller has built in PIR sensor and timer dimming function
- LiFePO4 battery is with longer lifetime, charge for 8 hours which can continuous working for 3 days
- IP65 protection
- Mono-crystalline photovoltaic with a higher conversation efficiency
- Adjustable angle
- Different mounting options
- Support hybrid function

Applications

- Village streets
- Urban road
- Courtyard
- Parking Lot

Dimentions and Mount

Product Dimension (Side Entry)	807x301x148mm
Luminaire Net Weight	6.0±0.3kg
Export Carton Size	750x370x195mm
Gross Weight	8.2±0.3kg
Mounting Option	Post top mount/Side entry mount Pole clamp bracket mount/Wall mount
Material	Aluminum alloy Polycarbonate optical lens LiFePO4 battery Mono-crystalline solar panel
Finish	Powder coating
Fixture Color	Silver
EPA	2.56ft²/0.23m²
IP Rating	IP65
Category of corrosion	C3 (ISO 9223:2012)

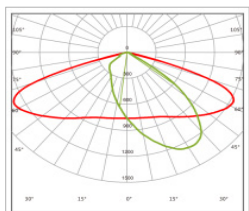
Lifespan and Warranty

Operating Temperature	0°C to +50°C
Life Time of LED @Ta=25°C	31000hrs-L90
	64000hrs-L80
	101000hrs-L70
Warranty	Battery
	Other accessories
	3 Years
	5 Years

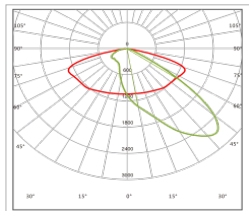
New Features

* Please consult us for details.

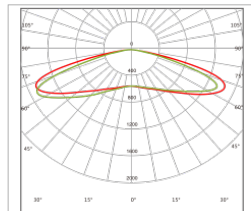
Photometry



R10801



R10803



R10805

Mounting Options



Side Entry Mount



Post Top Mount



Pole Clamp Bracket Mount



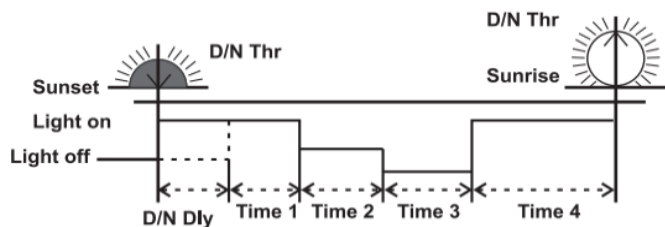
Wall Mount

Intelligent Control Mode

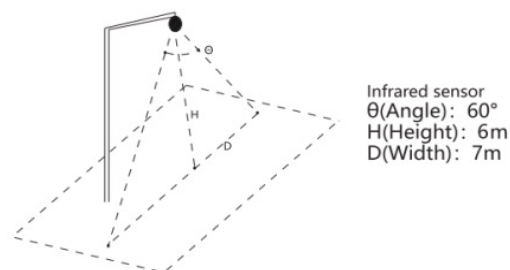
Main Function

This is hybrid solar energy street light. When the battery storage is insufficient (the battery voltage is lower than 9.6V), the luminaire will automatically switch to the mains power supply. When the solar power supply restores the voltage, the system will automatically cut off the mains power supply and restore the solar power supply.

4 Stages Night Mode



* Please note the sensor function is available from time 1 to time 4.
* You can set the fixtures with 4 stages timer dimming yourself by the remote control.

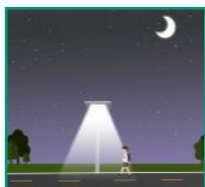


PIR Sensor Detect Areas

Factory Default setting



With sufficient natural light, the light keeps charging.



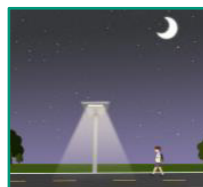
The light keeps 100% brightness for 0.5 hour.



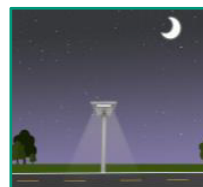
The light keeps 50% brightness when presence is detected in the 1st 4 hours.



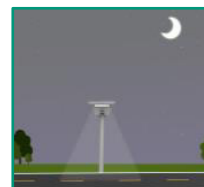
The light keeps 10% brightness when no presence is detected after 30S hold time in the 1st 4 hours.



The light keeps 20% brightness when presence is detected in the 2nd 4 hours.



The light keeps 10% brightness when no presence is detected after 30S hold time in the 2nd 4 hours.

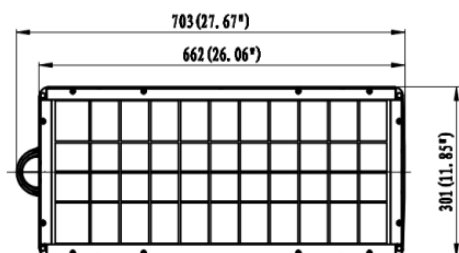
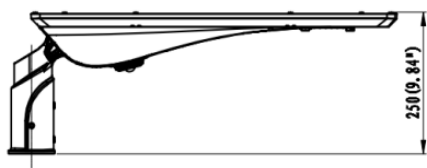


The light keeps 10% brightness for 3 hours until sunrise.

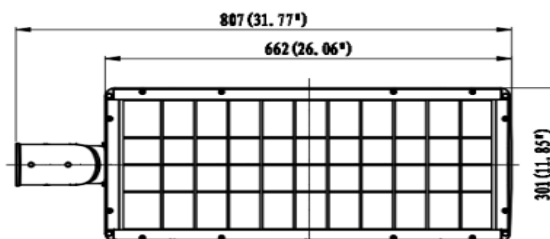
The Controller recognizes day and night based on the Solar Array Open Circuit Voltage, this day/night threshold can be modified according to local light conditions and the Solar Array Used, setting range 3.0 ~8.0V

Dimensions

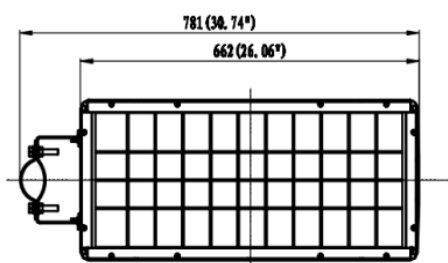
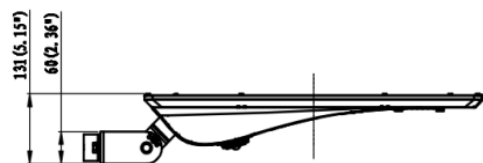
Unit: mm



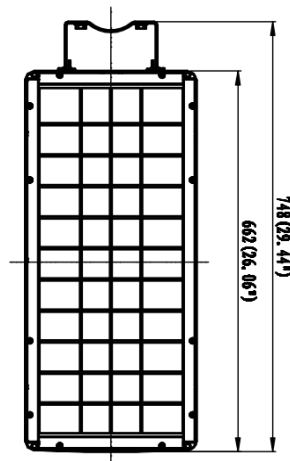
Post Top Mount



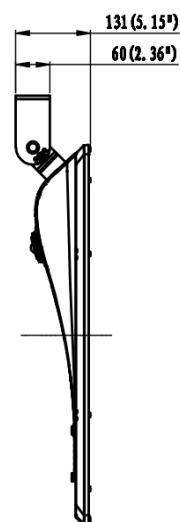
Side Entry Mount



Pole Clamp Bracket Mount



Wall Mount



Accessories



Optic lens

High transmittance PC materials,
UV test approval.

Code: please refer to Photometry for different beam
angle.



Pole mount spigot

ADC12 materials, $\pm 15^\circ$ tilt adjustable, for dia.34/
42/ 60/ 76mm pole.

Code: SP-R03-01(for dia.34mm)
Code: SP-R03-02(for dia.42mm)
Code: SP-R03-03(for dia.60mm)
Code: SP-R03-04(for dia.76mm)

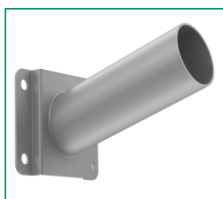


$\pm 30^\circ$ Pole Clamp Bracket

SPCC materials with outdoor powder coating,
can be also the wall mount bracket.

Pole Clamp Bracket for 60mm/76mm Pole
Only.

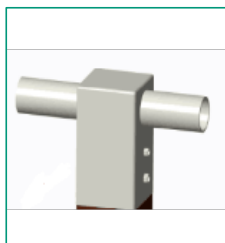
Code: BC-R43-01



Wall mount adaptor

Q235+SPCC materials with outdoor powder coating.

Code: SP-R03-18



T shape pole mount adaptor

Q235 with Akzo Powder Coating materials, for
100x100mm square pole.

Code: SP-R03-07



T shape pole mount adaptor

Q235 materials, for dia.60/ 76mm pole.

Code: SP-R03-06(for dia.60mm)
Code: SP-R03-08(for dia.76mm)



L shape pole mount adaptor

Q235 materials, for 100x100mm square pole.

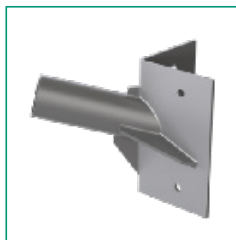
Code: SP-R03-10



L shape pole mount adaptor

Q235 materials, for dia.90mm pole.

Code: SP-R03-09(for dia.90mm)



Corner mount adaptor

SPCC materials with outdoor powder coating.

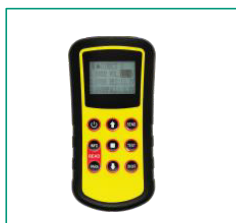
Code: SP-R19-02



L shape pole mount adaptor

Q235 materials, for dia.60mm pole.

Code: SP-R19-01(for dia.60mm)



Remote control

remote controller for solar street light.

Code: SG-Unit(JGB-8019)